

# DRAFT MASTER PLAN 2019

## WHAT TO LOOK OUT FOR IN GEYLANG AND MARINE PARADE!

Located at the city fringe, Geylang and Marine Parade are well-established residential areas, where good food, amenities and familiar heritage precincts are within easy reach. Residents can soon look forward to more community facilities, recreational and commercial offerings, and also opportunities to work nearer to home. With the completion of the Thomson-East Coast Line (TEL), the area will become more connected than ever. For more information on the Draft Master Plan 2019, please visit [ura.sg/DMP19](http://ura.sg/DMP19).

## HOW OUR TOWNS ARE PLANNED

Our towns are planned to be liveable and self-sufficient, with easily accessible shops, health care, schools, community facilities and parks. Commercial nodes, industrial estates and business parks within or nearby the town, also help to provide nearer job opportunities for residents. The detailed planning and implementation of plans for each town is a joint effort of many government agencies.



Aerial view of Marine Parade

## ELDERCARE FACILITY

Elderly residents of the area can be assured of convenient eldercare with a new facility scheduled to be completed in 2022 - offering a nursing home, centre-based custodial day care, day rehabilitation and home-based care services.

## PAYA LEBAR CENTRAL AND GEYLANG SERAI

More residents can find jobs nearer to home with new commercial developments at Paya Lebar Central. There is also a new community civic and cultural centre, the Wisma Geylang Serai, which serves as the heart of the Geylang Serai Precinct. With stakeholders coming together, there are plans to enliven and strengthen the cultural identity of the precinct through placemaking.

## UPGRADING OF MOUNTBATTEN CC

Mountbatten CC will be redeveloped to complement future housing and better serve residents.

## DAKOTA CRESCENT

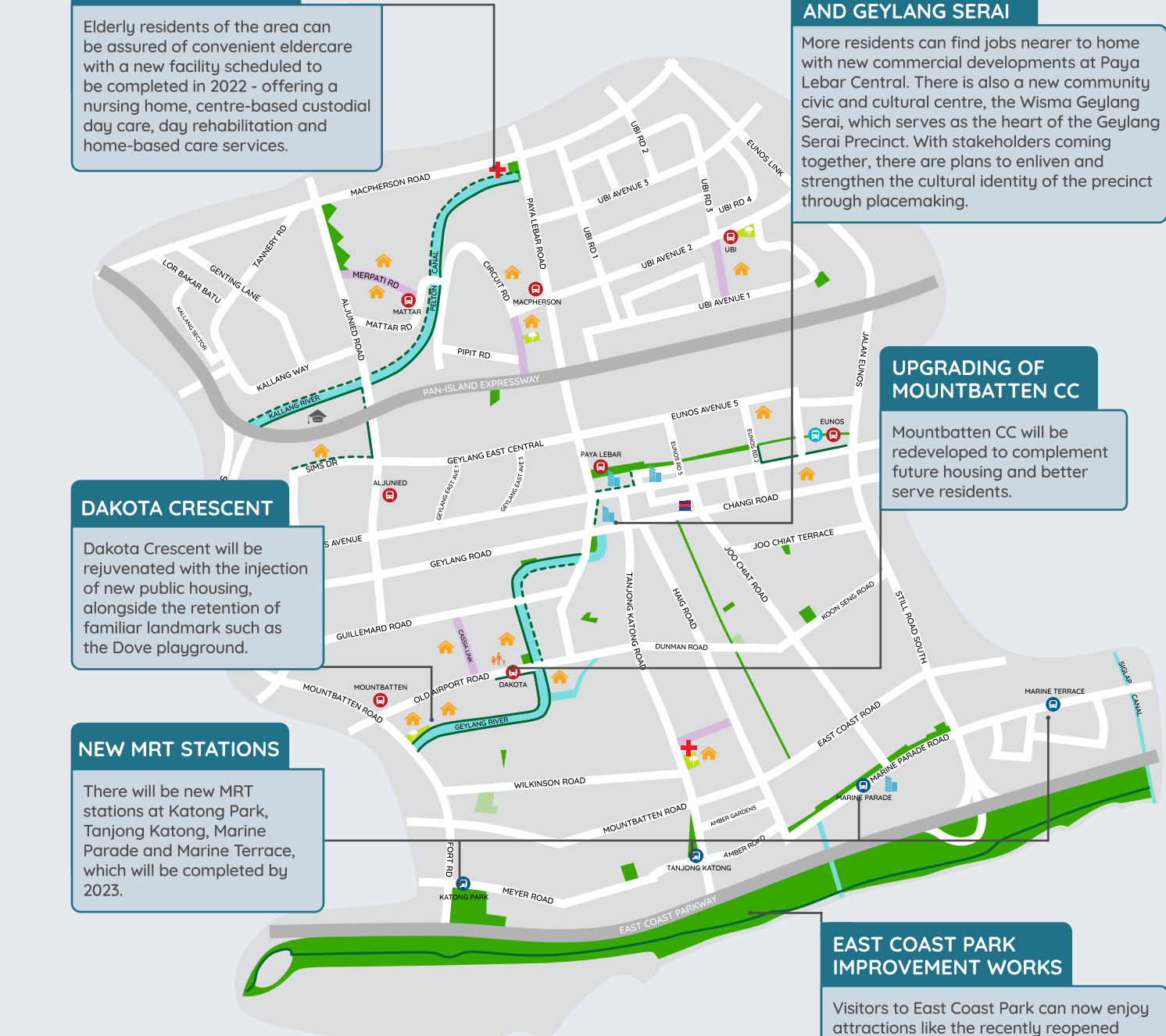
Dakota Crescent will be rejuvenated with the injection of new public housing, alongside the retention of familiar landmark such as the Dove playground.

## NEW MRT STATIONS

There will be new MRT stations at Katong Park, Tanjong Katong, Marine Parade and Marine Terrace, which will be completed by 2023.

## EAST COAST PARK IMPROVEMENT WORKS

Visitors to East Coast Park can now enjoy attractions like the recently reopened Raintree Cove. They can also look forward to a new Cyclist Park and a vertical playground with a lookout tower at the former Big Splash by 2020.



LEGEND	
<b>EXISTING DEVELOPMENTS</b>	<b>NEW DEVELOPMENTS</b>
Park	Residential
Interim Park	Commercial
MRT	School
Bus Interchange	Community Centre
Waterbody	Healthcare Facility
Park Connector/ Cycling Route	MRT
	Integrated Development
	Road Improvement (Upcoming/ Under Study)
	Park